

A Multifrequency MAC Specially Designed for Wireless Sensor Network Applications

GANG ZHOU, College of William and Mary

YAFENG WU, University of Virginia

TING YAN, Eaton Innovation Center

TIAN HE, University of Minnesota

CHENGDU HUANG, Google

JOHN A. STANKOVIC, University of Virginia

TAREK F. ABDELZAHER, University of Illinois at Urbana-Champaign

Multifrequency media access control has been well understood in general wireless ad hoc networks, while in wireless sensor networks, researchers still focus on single frequency solutions. In wireless sensor networks, each device is typically equipped with a single radio transceiver and applications adopt much smaller packet sizes compared to those in general wireless ad hoc networks. Hence, the multifrequency MAC protocols proposed for general wireless ad hoc networks are not suitable for wireless sensor network applications, which we further demonstrate through our simulation experiments. In this article, we propose MMSN, which takes advantage of multifrequency availability while, at the same time, takes into consideration the restrictions of wireless sensor networks. Through extensive experiments, MMSN exhibits the prominent ability to utilize parallel transmissions among neighboring nodes. When multiple physical frequencies are available, it also achieves increased energy efficiency, demonstrating the ability to work against radio interference and the tolerance to a wide range of measured time synchronization errors.

• **Information systems**→Database management system engines • **Computing methodologies**→Massively parallel and high-performance simulations. This is just an example, please use the correct category and subject descriptors for your submission. The ACM Computing Classification Scheme:

<http://www.acm.org/about/class/class/2012>. Please read the [HOW TO CLASSIFY WORKS USING ACM'S COMPUTING CLASSIFICATION SYSTEM](#) for instructions on how to classify your document using the 2012 ACM Computing Classification System and insert the index terms into your Microsoft Word source file.

Additional Key Words and Phrases: Wireless sensor networks, media access control, multi-channel, radio interference, time synchronization

ACM Reference Format:

Gang Zhou, Yafeng Wu, Ting Yan, Tian He, Chengdu Huang, John A. Stankovic, and Tarek F. Abdelzaher, 2010. A multi-frequency MAC specially designed for wireless sensor network applications. *ACM Trans. Embedd. Comput. Syst.* 9, 4, Article 39 (March 2010), 6 pages.

DOI:<http://dx.doi.org/10.1145/0000000.0000000>

This work is supported by the National Science Foundation, under grant CNS-0435060, grant CCR-0325197 and grant EN-CS-0329609.

Author's addresses: G. Zhou, Computer Science Department, College of William and Mary; Y. Wu and J.A. Stankovic, Computer Science Department, University of Virginia; T. Yan, Eaton Innovation Center; T. He, Computer Science Department, University of Minnesota; C. Huang, Google; T.F. Abdelzaher, (Current address) NASA Ames Research Center, Moffett Field, California 94035.

Permission to make digital or hardcopies of part or all of this work for personal or classroom use is granted without fee provided that copies are not made or distributed for profit or commercial advantage and that copies show this notice on the first page or initial screen of a display along with the full citation. Copyrights for components of this work owned by others than ACM must be honored. Abstracting with credits permitted. To copy otherwise, to republish, to post on servers, to redistribute to lists, or to use any component of this work in other works requires prior specific permission and/or a fee. Permissions may be requested from Publications Dept., ACM, Inc., 2 Penn Plaza, Suite 701, New York, NY 10121-0701 USA, fax +1 (212) 869-0481, or permissions@acm.org.

© 2010 ACM 1539-9087/2010/03-ART39 \$15.00

DOI:<http://dx.doi.org/10.1145/0000000.0000000>

1. INTRODUCTION

As a new technology, Wireless Sensor Networks (WSNs) has a wide range of applications [Culler et al. 2004; Bahl et al. 2004; Akyildiz et al. 2002], including environment monitoring, smart buildings, medical care, industrial and military applications. Among them, a recent trend is to develop commercial sensor networks that require pervasive sensing of both environment and human beings, for example, assisted living [Akyildiz et al. 2007; Harvard CodeBlue 2008; 2008] and smart homes [Harvard CodeBlue 2008; Adya et al. 2004; CROSSBOW 2008].

“For these applications, sensor devices are incorporated into human cloths [Natarajan et al. 2007; Zhou et al. 2008; Bahl et al. 2004; Adya et al. 2004] for monitoring health related information like EKG readings, fall detection, and voice recognition”.

While collecting all these multimedia information [Akyildiz et al. 2007] requires a high network throughput, off-the-shelf sensor devices only provide very limited bandwidth in a single channel: 19.2Kbps in MICA2 [Bahl et al. 2004] and 250Kbps in MICAz. In this article, we propose MMSN, abbreviation for Multifrequency Media access control for wireless Sensor Networks. The main contributions of this work can be summarized as follows.

- To the best of our knowledge, the MMSN protocol is the first multifrequency MAC protocol especially designed for WSNs, in which each device is equipped with a single radio transceiver and the MAC layer packet size is very small.
- Instead of using pairwise RTS/CTS¹ frequency negotiation [Adya et al. 2004; Culler et al. 2004; Tzamaloukas and Garcia-Luna-Aceves 2000; Zhou et al. 2008], we propose lightweight frequency assignments, which are good choices for many deployed comparatively static WSNs.
- We develop new toggle transmission and snooping techniques to enable a single radio transceiver in a sensor device to achieve scalable performance, avoiding the nonscalable “one control channel + multiple data channels” design [Natarajan et al. 2007].

2. MMSN PROTOCOL

2.1 Frequency Assignment

We propose a suboptimal distribution to be used by each node, which is easy to compute and does not depend on the number of competing nodes. A natural candidate is an increasing geometric sequence, in which

$$P(t) = \frac{b^{\frac{t+1}{T+1}} - b^{\frac{t}{T+1}}}{b - 1}, \quad (1)$$

where $t = 0, \dots, T$, and b is a number greater than 1.

In our algorithm, we use the suboptimal approach for simplicity and generality. We need to make the distribution of the selected back-off time slice at each node conform to what is shown in Equation (1). It is implemented as follows: First, a

¹ RTS/CTS controls are required to be implemented by 802.11-compliant devices. They can be used as an optional mechanism to avoid Hidden Terminal Problems in the 802.11 standard and protocols based on those similar to Akyildiz et al. [2002] and Adya et al. [2004].

random variable with a uniform distribution within the interval (0, 1) is generated on each node, then time slice i is selected according to the following equation:

$$i = \lceil (T + 1) \log_b [\alpha(b - 1) + 1] \rceil.$$

It can be easily proven that the distribution of i conforms to Equation (1).

So protocols [Bahl et al. 2004; Culler et al. 2004; Zhou et al. 2008; Adya et al. 2004; Culler et al. 2004; Tzamaloukas and Garcia-Luna-Aceves 2000; Akyildiz et al. 2002] that use RTS/CTS controls for frequency negotiation and reservation are not suitable for WSN applications, even though they exhibit good performance in general wireless ad hoc networks.

ALGORITHM 1. Frequency Number Computation

Input: Node a 's ID (ID_a), and node a 's neighbors' IDs within two communication hops.

Output: The frequency number ($FreNum_a$) node a gets assigned.

$index = 0$; $FreNum_a = -1$;

repeat

$Rnd_a = \text{Random}(ID_a, index)$;

$Found = TRUE$;

for each node β in a 's two communication hops **do**

$Rnd_\beta = \text{Random}(ID_\beta, index)$;

if ($Rnd_a < Rnd_\beta$) or ($Rnd_a = Rnd_\beta$ and $ID_a < ID_\beta$)

then

$Found = FALSE$; **break**;

end

end

if $Found$ **then**

$FreNum_a = index$;

else

$index++$;

end

until $FreNum_a > -1$;

2.1.1. Exclusive Frequency Assignment. In exclusive frequency assignment, nodes first exchange their IDs among two communication hops so that each node knows its twohop neighbors' IDs. In the second broadcast, each node beacons all neighbors' IDs it has collected during the first broadcast period.

Eavesdropping. Even though the even selection scheme leads to even sharing of available frequencies among any two-hop neighborhood, it involves a number of twohop broadcasts. To reduce the communication cost, we propose a lightweight eavesdropping scheme.

2.2 Basic Notations

As Algorithm 1 states, for each frequency number, each node calculates a random number (Rnd) for itself and a random number (Rnd) for each of its two-hop neighbors with the same pseudorandom number generator.

Bus masters are divided into two disjoint sets, MRT and MNRT.

RT Masters. $M_{RT} = \{\bar{m}_1, \dots, \bar{m}_n\}$ denotes the n RT masters issuing real-time constrained requests. To model the current request issued by an m_i in M , three

parameters—the recurrence time (ri), the service cycle (ci), and the relative deadline (di)—are used, with their relationships.

NRT Masters. $M_{NRT} = \{\bar{m}_{n+1}, \dots, \bar{m}_{n+m}\}$ is a set of m masters issuing nonrealtime constrained requests. In our model, each \bar{m}_j in M_{NRT} needs only one parameter, the service cycle, to model the current request it issues.

Here, a question may arise, since each node has a global ID. Why don't we just map nodes' IDs within two hops into a group of frequency numbers and assign those numbers to all nodes within two hops?

3. SIMULATOR

If the model checker requests successors of a state which are not created yet, the state space uses the simulator to create the successors on-the-fly. To create successor states the simulator conducts the following steps.

- (1) Load state into microcontroller model.
- (2) Determine assignments needed for resolving nondeterminism.
- (3) For each assignment.
 - (a) Either call interrupt handler or simulate effect of next instruction, or
 - (b) Evaluate truth values of atomic propositions.
- (4) Return resulting states.

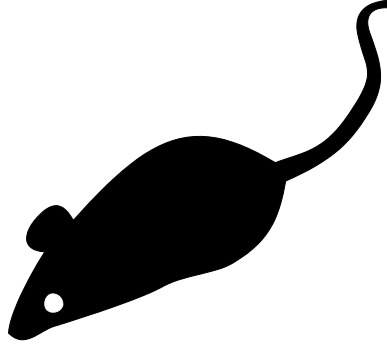


Fig. 1. Code before preprocessing.

Figure 1 shows a typical microcontroller C program that controls an automotive power window lift. The program is one of the programs used in the case study described in Section 3. At first sight, the programs looks like an ANSI C program. It contains function calls, assignments, if clauses, and while loops.

3.1 Problem Formulation

The objective of variable coalescence-based offset assignment is to find both the coalescence scheme and the MWPC on the coalesced graph. We start with a few definitions and lemmas for variable coalescence.

Definition 3.1 (Coalesced Node (C-Node)). A C-node is a set of live ranges (webs) in the AG or IG that are coalesced. Nodes within the same C-node cannot interfere with each other on the IG. Before any coalescing is done, each live range is a C-node by itself.

Definition 3.2 (C-AG (Coalesced Access Graph)). The C-AG is the access graph after node coalescence, which is composed of all C-nodes and C-edges.

LEMMA 3.3. The C-MWPC problem is NP-complete.

PROOF. C-MWPC can be easily reduced to the MWPC problem assuming a coalescence graph without any edge or a fully connected interference graph. Therefore, each C-node is an uncoalesced live range after value separation and C-PC is equivalent to PC. A fully connected interference graph is made possible when all live ranges interfere with each other. Thus, the C-MWPC problem is NP-complete. \square

LEMMA 3.4 (LEMMA SUBHEAD). The solution to the C-MWPC problem is no worse than the solution to the MWPC.

PROOF. Simply, any solution to the MWPC is also a solution to the C-MWPC. But some solutions to C-MWPC may not apply to the MWPC (if any coalescing were made). \square

Table I. Simulation Configuration

TERRAIN ^a	(200m×200m) Square
Node Number	289
Node Placement	Uniform
Application	Many-to-Many/Gossip CBR Streams
Payload Size	32 bytes
Routing Layer	GF
MAC Layer	CSMA/MMSN
Radio Layer	RADIO-ACCNOISE
Radio Bandwidth	250Kbps
Radio Range	20m–45m

Source: This is a table source note. This is a table source note.
This is a table source note.

Note: This is a table footnote.

^aThis is a table footnote. This is a table footnote. This is a table footnote.

4. PERFORMANCE EVALUATION

During all the experiments, the Geographic Forwarding (GF) [Akyildiz et al. 2002] routing protocol is used. GF exploits geographic information of nodes and conducts local data-forwarding to achieve end-to-end routing. Our simulation is configured according to the settings in Table I. Each run lasts for 2 minutes and repeated 100 times. For each data value we present in the results, we also give its 90% confidence interval.

5. CONCLUSIONS

In this article, we develop the first multifrequency MAC protocol for WSN applications in which each device adopts a single radio transceiver. The different MAC design requirements for WSNs and general wireless ad-hoc networks are compared, and a complete WSN multifrequency MAC design (MMSN) is put forth. During the MMSN design, we analyze and evaluate different choices for frequency assignments and also discuss the nonuniform back-off algorithms for the slotted media access design.

6. TYPICAL REFERENCES IN NEW ACM REFERENCE FORMAT

A paginated journal article [Abril and Plant 2007], an enumerated journal article [Cohen et al. 2007], a reference to an entire issue [Cohen 1996], a monograph (whole book) [Kosiur 2001], a monograph/whole book in a series (see 2a in spec. document) [Harel 1979], a divisible-book such as an anthology or compilation [Editor 2007] followed by the same example, however we only output the series if the volume number is given [Editor 2008] (so Editor00a's series should NOT be present since it has no vol. no.), a chapter in a divisible book [Spector 1990], a chapter in a divisible book in a series [Douglass et al. 1998], a multi-volume work as book [Knuth 1997], an article in a proceedings (of a conference, symposium, workshop for example) (paginated proceedings article) [Andler 1979], a proceedings article with all possible elements [Smith 2010], an example of an enumerated proceedings article [Gundy et al. 2007], an informally published work [Harel 1978], a doctoral dissertation [Clarkson 1985], a master's thesis: [Anisi 2003], an online document / world wide web resource [Thornburg 2001], [Ablamowicz and Fauser 2007], [Poker-Edge.Com 2006], a video game (Case 1) [Obama 2008] and (Case 2) [Novak 2003] and [Lee 2005] and (Case 3) a patent [Scientist 2009], work accepted for publication [Rous 2008], 'YYYYb'-test for prolific author [Saeedi et al. 2010a] and [Saeedi et al. 2010b]. Other cites might contain 'duplicate' DOI and URLs (some SIAM articles) [Kirschmer and Voight 2010]. Boris / Barbara Beeton: multi-volume works as books [Hörmander 1985b] and [Hörmander 1985a].

APPENDIX

In this appendix, we measure the channel switching time of Micaz [CROSSBOW 2008] sensor devices. In our experiments, one mote alternately switches between Channels 11 and 12. Every time after the node switches to a channel, it sends out a packet immediately and then changes to a new channel as soon as the transmission is finished. We measure the number of packets the test mote can send in 10 seconds, denoted as N_1 . In contrast, we also measure the same value of the test mote without switching channels, denoted as N_2 . We calculate the channel-switching time s as

$$s = \frac{10}{N_1} - \frac{10}{N_2}$$

By repeating the experiments 100 times, we get the average channel-switching time of micaz motes: 24.3 μ s.

ELECTRONIC APPENDIX

The electronic appendix for this article can be accessed in the ACM Digital Library.

ACKNOWLEDGMENTS

The authors would like to thank Dr. Maura Turolla of Telecom Italia for providing specifications about the application scenario.

REFERENCES

- Rafal Ablamowicz and Bertfried Fauser. 2007. CLIFFORD: a Maple 11 Package for Clifford Algebra Computations, version 11. (2007). Retrieved February 28, 2008 from <http://math.tntech.edu/rafal/cliff11/index.html>
- Patricia S. Abril and Robert Plant. 2007. The patent holder's dilemma: Buy, sell, or troll? *Commun. ACM* 50, 1 (Jan. 2007), 36–44. DOI:<http://dx.doi.org/10.1145/1188913.1188915>
- Sten Andler. 1979. Predicate Path expressions. In *Proceedings of the 6th. ACM SIGACT-SIGPLAN symposium on Principles of Programming Languages (POPL '79)*. ACM Press, New York, NY, 226–236.

DOI:<http://dx.doi.org/10.1145/567752.567774>

- David A. Anisi. 2003. *Optimal Motion Control of a Ground Vehicle*. Master's thesis. Royal Institute of Technology (KTH), Stockholm, Sweden.
- Brian Cabral and Leith C. Leedom. 1993. Imaging vector fields using line integral convolution. In *Proceedings of the 20th Annual Conference on Computer Graphics and Interactive Techniques (SIGGRAPH'93)*. ACM, New York, NY, 263–270. DOI:<http://dx.doi.org/10.1145/166117.166151>
- Kenneth L. Clarkson. 1985. *Algorithms for Closest-Point Problems (Computational Geometry)*. Ph.D. Dissertation. Stanford University, Palo Alto, CA. UMI Order Number: AAT 8506171.
- Jacques Cohen (Ed.). 1996. Special Issue: Digital Libraries. *Commun. ACM* 39, 11 (Nov. 1996).
- Sarah Cohen, Werner Nutt, and Yehoshua Sagie. 2007. Deciding equivalences among conjunctive aggregate queries. *J. ACM* 54, 2, Article 5 (April 2007), 50 pages. DOI:<http://dx.doi.org/10.1145/1219092.1219093>
- John G. Daugman. 1985. Uncertainty relation for resolution in space, spatial frequency, and orientation optimized by two dimensional visual cortical filters. *J. Optical Soc. Amer. A: Optics, Image Science, Vision* 2, 7 (1985), 1160–1169.
- Bruce P. Douglass, David Harel, and Mark B. Trakhtenbrot. 1998. Statecars in use: structured analysis and object-orientation. In *Lectures on Embedded Systems*, Grzegorz Rozenberg and Frits W. Vaandrager (Eds.). Lecture Notes in Computer Science, Vol. 1494. Springer-Verlag, London, 368–394. DOI:http://dx.doi.org/10.1007/3-540-65193-4_29
- Ian Editor (Ed.). 2007. *The title of book one* (1st. ed.). The name of the series one, Vol. 9. University of Chicago Press, Chicago. DOI:<http://dx.doi.org/10.1007/3-540-09237-4>
- Ian Editor (Ed.). 2008. *The title of book two* (2nd. ed.). University of Chicago Press, Chicago, Chapter 100. DOI:<http://dx.doi.org/10.1007/3-540-09237-4>
- David J. Field, Anthony Hayes, and Robert F. Hess. 1993. Contour integration by the human visual system: Evidence for a local “association field”. *Vision Res.* 33, 2 (1993), 173–193. DOI:[http://dx.doi.org/10.1016/0042-6989\(93\)90156-Q](http://dx.doi.org/10.1016/0042-6989(93)90156-Q)
- David Fowler and Colin Ware. 1989. Strokes for Representing Univariate Vector Field Maps. In *Proceedings of Graphics Interface*. Canadian Human-Computer Communications Society, Mississauga, Ontario, 249–253.
- Matthew Van Gundy, Davide Balzarotti, and Giovanni Vigna. 2007. Catch me, if you can: Evading network signatures with web-based polymorphic worms. In *Proceedings of the first USENIX workshop on Offensive Technologies (WOOT '07)*. USENIX Association, Berkley, CA, Article 7, 9 pages.
- David Harel. 1978. *LOGICS of Programs: AXIOMATICS and DESCRIPTIVE POWER*. MIT Research Lab Technical Report TR-200. Massachusetts Institute of Technology, Cambridge, MA.
- David Harel. 1979. *First-Order Dynamic Logic*. Lecture Notes in Computer Science, Vol. 68. Springer-Verlag, New York, NY. DOI:<http://dx.doi.org/10.1007/3-540-09237-4>
- Lars Hörmander. 1985a. *The analysis of linear partial differential operators. III*. Grundlehren der Mathematischen Wissenschaften [Fundamental Principles of Mathematical Sciences], Vol. 275. Springer-Verlag, Berlin, Germany. viii+525 pages. Pseudodifferential operators.
- Lars Hörmander. 1985b. *The analysis of linear partial differential operators. IV*. Grundlehren der Mathematischen Wissenschaften [Fundamental Principles of Mathematical Sciences], Vol. 275. Springer-Verlag, Berlin, Germany. vii+352 pages. Fourier integral operators.
- David H. Hubel and Torsten N. Wiesel. 1962. Receptive fields, binocular interaction and functional architecture in the cat's visual cortex. *J. Physiol.* 160, 1 (1962), 106–154. <http://jp.physoc.org>
- David H. Hubel and Torsten N. Wiesel. 1968. Receptive fields and functional architecture of monkey striate cortex. (1968). <http://jp.physoc.org/cgi/content/abstract/195/1/215>
<http://www.hubel/papers/uconn.html>.
- Bruno Jobard and Wilfrid Lefer. 1997. Creating evenly-spaced streamlines of arbitrary density. In *Proceedings of the Eurographics Workshop*. Springer Verlag, Berlin, 43–56.
- Markus Kirschmer and John Voight. 2010. Algorithmic Enumeration of Ideal Classes for Quaternion Orders. *SIAM J. Comput.* 39, 5 (Jan. 2010), 1714–1747. DOI:<http://dx.doi.org/10.1137/080734467>
- Donald E. Knuth. 1997. *The Art of Computer Programming, Vol. 1: Fundamental Algorithms* (3rd. ed.). Addison Wesley Longman Publishing Co., Inc.
- David Kosiur. 2001. *Understanding Policy-Based Networking* (2nd. ed.). Wiley, New York, NY.
- David H. Laidlaw, J. Scott Davidson, Timothy S. Miller, Marco da Silva, R. M. Kirby, William H. Warren, and Michael Tarr. 2001. Quantitative comparative evaluation of 2D vector field visualization methods. In *Proceedings of the Conference on Visualization (VIS'01)*. IEEE Computer Society, Los Alamitos, CA, 143–150.
- Newton Lee. 2005. Interview with Bill Kinder: January 13, 2005. Video, *Comput. Entertain.* 3, 1, Article 4 (Jan.-March 2005). DOI:<http://dx.doi.org/10.1145/1057270.1057278>
- Zhaoping Li. 1998. A neural model of contour integration in the primary visual cortex. *Neural Comput.* 10, 4 (1998), 903–940. DOI:<http://dx.doi.org/10.1162/089976698300017557>

- Nick Lund. 2001. *Attention and Pattern Recognition*. Routledge, New York, NY.
- Dave Novak. 2003. Solder man. Video. In *ACM SIGGRAPH 2003 Video Review on Animation theater Program: Part I - Vol. 145 (July 27–27, 2003)*. ACM Press, New York, NY, 4. DOI:<http://dx.doi.org/99.9999/woot07-S422>
- Barack Obama. 2008. A more perfect union. Video. (5 March 2008). Retrieved March 21, 2008 from <http://video.google.com/videoplay?docid=6528042696351994555>
- Daniel Pineo and Colin Ware. 2008. Neural modeling of flow rendering effectiveness. In *Proceedings of the 5th Symposium on Applied Perception in Graphics and Visualization (APGV'08)*. ACM, New York, NY, 171–178. DOI:<http://dx.doi.org/10.1145/1394281.1394313>
- Poker-Edge.Com. 2006. Stats and Analysis. (March 2006). Retrieved June 7, 2006 from <http://www.poker-edge.com/stats.php>
- Bernard Rous. 2008. The Enabling of Digital Libraries. *Digital Libraries* 12, 3, Article 5 (July 2008). To appear.
- Mehdi Saeedi, Morteza Saheb Zamani, and Mehdi Sedighi. 2010a. A library-based synthesis methodology for reversible logic. *Microelectron. J.* 41, 4 (April 2010), 185–194.
- Mehdi Saeedi, Morteza Saheb Zamani, Mehdi Sedighi, and Zahra Sasanian. 2010b. Synthesis of Reversible Circuit Using Cycle-Based Approach. *J. Emerg. Technol. Comput. Syst.* 6, 4 (Dec. 2010).
- Joseph Scientist. 2009. The fountain of youth. (Aug. 2009). Patent No. 12345, Filed July 1st., 2008, Issued Aug. 9th., 2009.
- Stan W. Smith. 2010. An experiment in bibliographic mark-up: Parsing metadata for XML export. In *Proceedings of the 3rd. annual workshop on Librarians and Computers (LAC '10)*, Reginald N. Smythe and Alexander Noble (Eds.), Vol. 3. Paparazzi Press, Milan Italy, 422–431. DOI:<http://dx.doi.org/99.9999/woot07-S422>
- Asad Z. Spector. 1990. Achieving application requirements. In *Distributed Systems* (2nd. ed.), Sape Mullender (Ed.). ACM Press, New York, NY, 19–33. DOI:<http://dx.doi.org/10.1145/90417.90738>
- Harry Thornburg. 2001. Introduction to Bayesian Statistics. (March 2001). Retrieved March 2, 2005 from <http://ccrma.stanford.edu/~jos/bayes/bayes.html>
- Greg Turk and David Banks. 1996. *Image-guided streamline placement*. Technical Report I-CA2200. University of California, Santa Barbara, CA. 453–460 pages. DOI:<http://dx.doi.org/10.1145/237170.237285>
- Colin Ware. 2008. Toward a Perceptual Theory of Flow Visualization. *IEEE Comput. Graph. Appl.* 28, 2 (2008), 6–11. DOI:<http://dx.doi.org/10.1109/MCG.2008.39>

Received February 2007; revised March 2009; accepted June 2009

Online Appendix to: A Multifrequency MAC Specially Designed for Wireless Sensor Network Applications

GANG ZHOU, College of William and Mary

YAFENG WU, University of Virginia

TING YAN, Eaton Innovation Center

TIAN HE, University of Minnesota

CHENGDU HUANG, Google

JOHN A. STANKOVIC, University of Virginia

TAREK F. ABDELZAHER, University of Illinois at Urbana-Champaign

A. THIS IS AN EXAMPLE OF APPENDIX SECTION HEAD

Channel-switching time is measured as the time length it takes for motes to successfully switch from one channel to another. This parameter impacts the maximum network throughput, because motes cannot receive or send any packet during this period of time, and it also affects the efficiency of toggle snooping in MMSN, where motes need to sense through channels rapidly.

By repeating experiments 100 times, we get the average channel-switching time of Micaz motes: 24.3 μ s. We then conduct the same experiments with different Micaz motes, as well as experiments with the transmitter switching from Channel 11 to other channels. In both scenarios, the channel-switching time does not have obvious changes. (In our experiments, all values are in the range of 23.6 μ s to 24.9 μ s.)

B. APPENDIX SECTION HEAD

The primary consumer of energy in WSNs is idle listening. The key to reduce idle listening is executing low duty-cycle on nodes. Two primary approaches are considered in controlling duty-cycles in the MAC layer.